



Eastern Idaho Community
Action Partnership

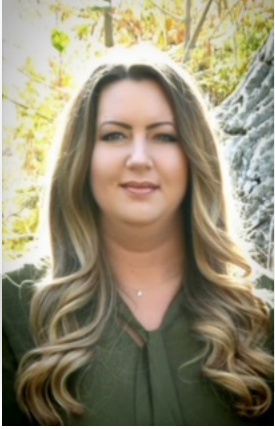
Annual Report
2 0 2 2



Table of Contents

- 1** Letter from the Chief Executive Officer
- 2** Letter from the Board Chair
- 3** Community Action Promise and Mission Statement
- 4** Goals and Strategies
- Results: Statistics and Success Stories of Building a Stronger Community...
- 6** One Life at a Time
- 8** One Child at a Time
- 10** One Meal at a Time
- 12** One Home at a Time
- 13** One Partnership at a Time
- 14** One Volunteer at a Time
- 15** One Employee at a Time
- 16** One Education at a Time
- 17** 2021 Report - Financial Audit Results
- 19** Birth to Five - Proposed Budget and Services
- 21** Birth to Five 2020-2021 School Year Report
- 27** Event Photos

From the Chief Executive Officer



As the interim CEO of Eastern Idaho Community Action Partnership, Inc., it is my pleasure to present to you our annual report for the year. This year marks 54 years of “helping people and changing lives”.

This past year has been one of immense challenges for us all. Still reeling from the residual impacts from the COVID-19 pandemic and resulting challenges in the local job market, it has been a time of uncertainty and hardship. Yet, through it all, EICAP has remained steadfast in our commitment to serving those in need. Despite the challenges presented, we have remained committed to our mission to help and empower at risk individuals and families meet their basic needs and increase their independence through support and education. This year, we have all continued to work tirelessly to empower our community and improve the quality of life for its

members.

Thanks to the hard work and dedication of our staff and volunteers, we have been able to provide critical support to individuals and families throughout our community. Whether it was through our food pantries, energy and rental assistance programs, weatherization of homes, Head Start and Early Head Start programs, services to seniors, affordable housing to families and individuals, or the support of our administration team we have been able to continue making a real difference in the lives of those we serve. Together, we can build a brighter future for all.

Over the past year, we have faced significant challenges, as many of our programs have been impacted by staffing shortages. However, we have worked tirelessly to explore opportunities and pursue community partnerships. None of this would have been possible without the hard work and dedication of our staff, volunteers, and community partners. As we move forward, we remain committed to fostering partnerships and collaborations that will enable us to have an even greater impact on our community. We believe that by working together with other organizations and community leaders, we can achieve our shared goals and create a more equitable and prosperous community for all.

Looking ahead, we know that there will continue to be challenges that lie ahead. But with everyone’s continued support, we are confident that we can meet these challenges head-on and continue to make a meaningful difference in the lives of those we serve. As we move forward, we remain committed to our mission and to the individuals and families who rely on us for support. We will continue to seek out new opportunities to create positive change in our community, and we are excited about the possibilities that lie ahead. Thank you for your continued support of Eastern Idaho Community Action Partnership and belief in our mission. We look forward to sharing more updates with you as we continue our work in the coming year.

Susan Espinoza, Interim CEO

Eastern Idaho Community Action Partnership, Inc.

1

From the Board President

I am a HUGE Sesame Street fan! How could I not be? The show made its debut when I was two years old (that definitely dates me), I grew up on Sesame Street. The Muppets fascinated me with their bright colors and fur and feathers. More than the aesthetics of the show, even at an early age, I loved the message. One of learning, laughter, music, positivity, community and helping each other.

Episode 4037 features “Super Grover” who fancies himself a superhero. As Grover flies off, Big Bird is upset because he cannot fly and is not a superhero. Maria assures Big Bird that even though those things are true, there are still plenty of things that he can do to help people and they break out into song. “Helping People”, the song is about the many small ways we can help someone. Although they do not say it, the implication is that not all superheroes fly. This goes along with a commonly used catchphrase, “not all superheroes wear capes.” Through this sweet song, Big Bird realizes that he can and does help people.



I am so honored to begin my first year as the President of the Board of Eastern Idaho Community Action Partnership. I was elected to the Board in July of 2021. Looking back on that time and all of 2022, the first word that comes to mind is “resilience.” EICAP the agency, through its employees, have demonstrated a resilience that three years ago, no one could have imagined. Coming out of “that couple of years that we shall not mention,” EICAP has had to pivot not unlike the community we serve. Housing, childcare, employment challenges and the cost of living and home repair challenges are even larger issues in our community than before. Our mission has always been vital to the communities we serve but now more than ever we have opportunities to assist more and more children, individuals, families and seniors.

Our employees have felt the impact as well. Like many employers across the nation, it has become more difficult to hire and retain staff. As a result, many of our employees have had to fill in the gaps by taking on more roles and responsibilities. Our employees have had to innovate and find different ways to accomplish tasks.

To our employees who have stuck these last couple of years out and to those who have taken a chance on us and just begun, I believe you are all superheroes to Eastern Idaho. On behalf of the Board of Directors: We see you! We appreciate you! Thank you for being Big Birds.

Devon Jackson

EICAP Board of Directors

Community Action Promise

Community Action changes people's lives, embodies the spirit of hope, improves communities, and makes America a better place to live. We care about the entire community, and we are dedicated to helping people help themselves and each other.

EICAP's Mission Statement

Eastern Idaho Community Action Partnership helps and empowers at risk individuals and families meet their basic needs and increase their independence through support and education.

Goals & Strategies

Empowering Low-Income Individuals and Families

- 1** Reduce barriers to obtaining and maintaining affordable housing among low income households.

Engaging and Revitalizing our Community

- 2** Expand the availability and quality of affordable housing within our community.

Increasing our Agency's Capacity

- 3** Increase the availability of unrestricted dollars to meet the diverse low-income needs of our community.
- 4** Establish EICAP as a leader among innovative, sustainable, and collaborative Head Start programs.

Building a stronger community

6,183

Transportation boardings for seniors

3,578.5

Hours of Homemaker assistance for frail seniors

3,381

Information & Assistance staff provided or referrals

3,578.5

Hours of Respite services provided to caregivers

9

Caregivers that participated in GRG group

201

Consultations provided by the Ombudsman Program

264

Adult Protection reports investigated

334.5

Hours of legal assistance to seniors

14

Caregivers participated in the Caregiver Support Group

65

Orders of needed incontinence supplies provided to low-income seniors over the age of 60



Area Agency on Aging

The Aging Program provides many services to those who are age 60 and older. Such services include:

- In-home services
- Ombudsman assistance
- Legal advice, counseling, and representation
- Adult protection for abuse, neglect and exploitation
- Caregiver support and respite offering free time to caregivers
- Resources and support to grandparents raising grandchildren
- Congregate Meals and Home Delivered Meals
- Evidence-Based Health Promotion and Caregiver workshops



Idaho Falls Senior Center meal preparation



Ririe Senior Center meal preparation

one LIFE at a time.

13,017

Total unduplicated number of all INDIVIDUALS served

1

The number of individuals who achieved and maintained capacity to meet basic needs for 90 days

5

The number of individuals who demonstrated increased nutrition skills

2

Unemployed adults who obtained employment (up to a living wage)

1

The number of individuals who achieved and maintained employment for at least 90 days

46

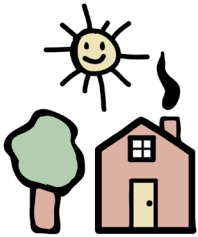
The number of households experiencing homelessness who obtained safe temporary shelter

24

The number of households who obtained safe and affordable housing

7,438

Total unduplicated number of all HOUSEHOLDS served



The Haven Shelter

The Haven Shelter underwent several changes during the year. After a temporary closure in 2021 to restructure and renovate rooms following a comprehensive analysis was completed to ensure the facility was safe for residents due to the age of the buildings, the shelter was re-opened. A ribbon cutting and open house was held allowing community members to tour the facility.

A limited number of clients moved in during 2022 and participated in the program that included shelter, learning new life skills, and making progress toward self-sufficiency.

During the year, it was determined that EICAP was not the agency best suited to run a homeless shelter. In May 2022, ownership of the shelter was transferred to the Idaho Falls Rescue Mission, a local agency already in the homeless shelter arena, operating two other shelters.



Building a stronger community

Grandparents Raising Grandchildren

This program works with individuals who are in need of information, resources, and support regarding: medical, legal, behavioral and school issues. The Grandparents Raising Grandchildren Support Group meets on the 4th Tuesday of each month. Contact EICAP for more information: 208-522-5391

11

Grandparents participated in the Grandparents Raising Grandchildren Program



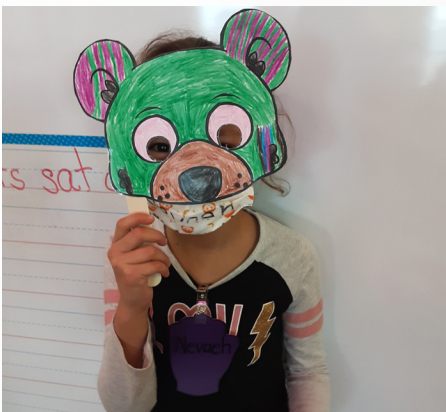
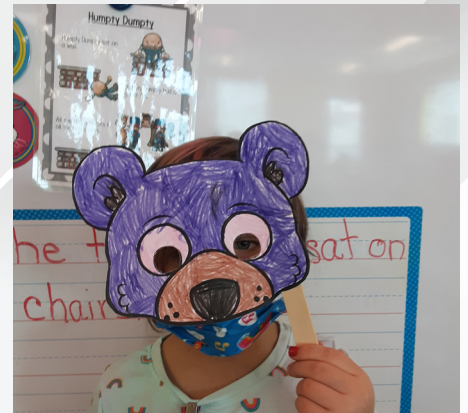
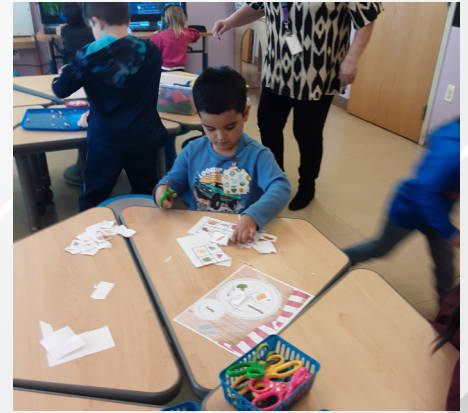
Head Start Program

EICAP's Head Start and Early Head Start program provides fun and engaging, high-quality, educational services to children ages 0 to 5 throughout 8 centers. Our Early Head Start centers provide comprehensive early child development for infants and toddlers ages birth to 3. We operate two Early Head Start Centers in Idaho Falls, and one Early Head Start center in Blackfoot. Our Head Start centers focus on school readiness by enhancing children's cognitive, social, and emotional development from ages 3 to 5. We operate two Head Start centers in Idaho Falls, one in Blackfoot, one in Salmon, one in Driggs, and one in Rexburg.

Within the classroom, staff are dedicated to keeping children safe and helping children grow, while ensuring the children in our care are kindergarten ready. Head Start is the nation's premier pre-school program, differing from others, because services are not limited to the classroom or the child. Our support staff works with the families to foster relationships, build upon families' strengths, help families set goals, support the family's well-being, and increase self-sufficiency. We strive in helping parents understand their important role in being their child's first, and most influential teacher! Parents and caregivers are encouraged to be involved in their child's education so they can bring the love of learning from the classroom to their home.



one CHILD at a time.



Building a stronger community

Salmon Food Pantry

The Salmon office is dedicated to assisting community members in need. Whether that need is education, heat assistance, food, or just information on who to talk to next. We strive every day to provide our clients with a positive interaction and with the knowledge to improve their circumstances. We partner with a variety of community members from businesses, other nonprofits, and schools to individual community members that wish to be part of building their community up and assisting those most vulnerable.

- **1,605** – TEFAP – Food Boxes distributed
- **1,615** – Community Donations – Food boxes with Community Donations distributed
- **458** – CSFP – Food Boxes distributed



Newspaper for Donation to Food Bank



Community member food drive



Coffee donation drive



Refrigerator donation from Dairy West for Food Pantry



Seeds donated for Food Pantry clients to grow their own food



Fresh Fruit & Vegetable donation

one **MEAL** at a time.

Challis Food Pantry

- **354** – TEFAP – Food Boxes distributed
- **355** – Community Donations – Food boxes with Community Donations distributed
- **116** – CSFP – Food Boxes distributed

*Thank you so sincerely - All of you -
For the food bank I am fortunate
to receive. You all work so hard,
are so accepting and appreciative
and professional. I don't feel
"less" because I qualify. All of you
Treat everyone equal. The Cunningham*

Rexburg Food Pantry

- **1,364** – TEFAP – Food Boxes distributed
- **1,374** – Community Donations – Food boxes with Community Donations distributed
- **506** – CSFP – Food Boxes distributed

120,524

Home Delivered meals
served to seniors

30,694

Congregate Meals
served to seniors



Fall River Electric donation to the Rexburg Food Pantry

3,323

of TEFAP food
boxes distributed
(The Emergency Food
Assistance Program)

3,344

of boxes
distributed with
Community
Donations



Easter basket donation for kids at the Rexburg Food Pantry

458

of CSFP food
boxes distributed.
(Commodity
Supplemental Food
Program for Seniors)

Building a stronger community

4,809

Eligible households received LIHEAP (Low Income Home Energy Assistance) services

165

Eligible households received Energy Assistance (Through Energy Assistance Local Funds)

2,578

Received LIHEAP Heat assistance

62

Project Help - households received assistance using Project Help (City of Idaho Falls)

570

Received LIHEAP Emergency assistance

58

Good Neighbor Fund - households received assistance using Good Neighbor Funds (Salmon River Electric)

1,661

Received LIHEAP Crisis assistance

922

Eligible households received LIHWAP (Low Income Home Water Assistance Program) services. Program started in October 2021.

28

Lend A Hand - households received assistance using Lend A Hand (Rocky Mountain Power)

7,438

Total unduplicated number of all HOUSEHOLDS served

17

Project Warmth - households received assistance using Project Warmth (Intermountain Gas)

Housing

Eastern Idaho Community Action Partnership, Inc. continues to provide affordable housing across Eastern Idaho with 10 properties located in Blackfoot, Idaho Falls, Roberts, Rexburg, and St. Anthony, Idaho. Of the 323 units EICAP owns, 98 units are dedicated to Senior/Disabled individuals and a total of 224 units and one home are dedicated to low-income individuals/families.

Syringa Property Management continues to provide management and oversight of day-to-day operations of EICAP's housing portfolio. Several maintenance projects and improvements at the properties were completed during the year, including a remodel to the office at Aspen Park Apartments.

We completed the rebuild of the Twin Pines 8-plex in June that was damaged by fire in the previous year. Unfortunately, in 2022, we experienced two more fires in two different properties: Riverside Senior Housing in February impacting one unit, and another fire at Twin Pines Manor near the end of October impacting 8 units. The rebuild of the Riverside unit finished up just in time to coincide with our year-end (pictures).

Eastern Idaho Community Action

January 31, 2022

To whom it may concern:

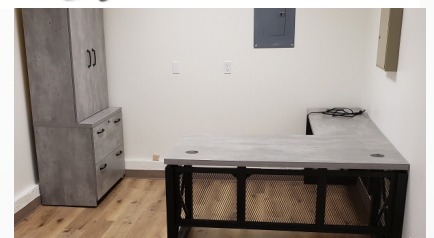
I received the information this morning that you have calculated my benefit amount and it will be paid to the City of Idaho Falls.

I would like to personally thank any member of EICA who had anything to do with this!

The unusually cold November and December eastern Idaho weather — in conjunction with the incessant inflation in food and other areas — have made this last few months extremely hard. The help from the LIHEAP program will help me by allowing money which would be budgeted for heating costs to be used to help in other areas.

I thank you all sincerely,

Steve Snowflake



one HOME at a time.

Weatherization

Weatherization worked on and completed 70 homes with an average cost of \$12,404.00. We served a total of 174 customers, 35 were disabled, 80 were children, and 25 were elderly.

We completed 40 homes in Bonneville County, 7 in Butte County, 1 in Custer, 3 in Fremont County, 7 in Jefferson County, 5 in Lemhi County, 7 in Madison County.

Measures that we did include: New windows, new exterior doors, attic, floor and wall insulation, infiltration measures, (this includes, weather stripping old doors, replacing broken glass, sealing heat ducts, replacing dryer vents) we also installed duct insulation, smoke alarms, CO detectors, replaced old refrigerators, repaired or replaced water heaters and heating systems. We spent a total of \$868,288.00 on the 70 homes completed.

Eligibility is based on household income; we encourage all low-income families or individuals in need of assistance to apply. Staff are available to assist families and individuals who apply for the year-round program.

hi there, please communicate this to Your Supervisor and Any Whom are involved in making this program happen. I am extremely impressed with the responsiveness and ability for Your program to actually assist. Your design and ability to help Families in actual need is unprecedented to My knowledge. Friendly, fast, efficient, and effective. We would have extreme difficulty without Your help and support. I have had other assistance in the past and it can be very difficult, and frowned upon to get help when needed. I only had to apply and submit the appropriate paperwork. I would also share that the Staff and professionalism of Those Who Helped Us was excellent. I did not feel the usual drudgery in Their Countenance, but a sincere desire to Serve.

158

Households assisted to receive rental assistance from Idaho Housing & Finance Association Emergency Rental Assistance Program

27

Households assisted to receive utility assistance from Idaho Housing & Finance Association Emergency Rental Assistance Program



The following 4 responses are from some of the individuals and families that received assistance through EICAP's Weatherization program. All agreed that the work was satisfactory and that the job site was cleaned upon completion.

"The work has made a big difference."

Bonneville County

"The crew was great to talk to us about ways to save energy. Our previous windows and doors let in a lot of cold air."

Bonneville County

"All the work done is going to save me a lot of Money."

Butte County

"I learned a lot from the crew, I was able to turn my thermostat down from 74 to 67 degrees."

Freemont County

12

Building a stronger community one **PARTNER** at a time.

Partnership List and Contracted Providers:

Ashton Senior Center
 Idaho Falls Senior Community Center
 Lost River Senior Center
 Mackay Senior Citizens Center
 Madison County Senior Center
 Rigby Senior Center
 Ririe Senior Citizens Center
 Salmon Valley Senior Center
 South Fremont Senior Citizens Center
 Seniors West of the Tetons
 West Jefferson Senior Citizens Center

William Cobbley Senior Center (Challis)
 Lemhi Co Economic Development Association (LCEDA)
 Assisting Hands Home Care
 Personal Home Care
 Premium Choice Home Care
 QualiCare, Inc
 Idaho Legal Aid
 United Way of Bonneville County
 AS Long Nutrition (Dietician Services)
 Regence Blue Shield



Building a stronger community one **VOLUNTEER** at a time.

20,880.9

Total Number of
Volunteer Hours
Donated by
individuals with
low incomes

23,389.4

Total Volunteer
Hours Donated to
the Agency

225.30

Hours volunteered
by
Volunteer
Assistant
Ombudsmen

374

Miles volunteered
by
Volunteer
Assistant
Ombudsmen

Why Should I Volunteer?

The experiences and memories acquired when sharing your time and helping others is invaluable. It benefits both parties. You may:

- Gain the satisfaction of making a difference in someone's life and our community
- Have fun and meet new people
- Challenge your attitudes and beliefs
- Experience team work
- Develop life and work place skills
- Demonstrate responsibility and dependability to future employment opportunities
- Explore career opportunities and enhance your resume
- Improve your self-confidence
- Grow personally
- Expand your community networks

<http://www.eicap.org/volunteer>

How to Get Involved:

There are volunteer activities that range from 1-2 hours each week to an occasional special project that might involve 10-12 hours of your time. We will consider new activities as well as fundraising events should you have any other ideas and talents that you wish to share.

Head Start Program - Needs volunteers to assist in the classroom and during family literacy programs and special events.

VOICE - Improves the quality of care and makes a difference in the lives of elders who live in long-term-care facilities. Volunteers are trained and assigned to a facility to visit weekly, advocate and help solve problems for residents.

SMP - Senior Medicare Patrol trains volunteers to assist Medicare beneficiaries and their families avoid, detect, and prevent health care fraud.

Opportunities to Volunteer available in the Family & Emergency Services Department

Volunteers needed to assist at the EICAP Food Pantries. Volunteers who wish to volunteer will be given instructions and training. For more information contact:

Rexburg Food Pantry

208-356-8849

Salmon & Challis Food Pantry

208-756-3999

Building a stronger community one **EMPLOYEE** at a time.

The following certifications are held by EICAP staff that increase agency capacity.

1

National
Certified ROMA
Implementers

5

Certified
Community Action
Professionals (CCAP)

15

Staff with child
development
certifications

2

Staff with family
development
certifications

4

Staff with
Home Energy
Professional
Certifications

3

Other
Certifications



15

Building a stronger community one **EDUCATION** at a time.

Angela Magnani Tuition Assistance Program

	Number of students	Total Amount
January-22	15	\$ 10,385.00
April-22	13	\$ 13,560.00
September-22	13	\$ 22,355.00
Total:	41	\$ 46,300.00

4
of individuals who obtained Bachelor Degrees

1
of individuals who obtained a vocational certificate

Thank you for allowing me to be part of the Angela Magnani Wood Tuition Assistance Program. I am really grateful to be a recipient of this scholarship award. Your support allows me to continue my studies at Brigham Young University-Idaho.

I am a sophomore student in the Computer Information Technology major. After graduation, I hope to work with cybersecurity and continue my education in my field of study. This Computer Information Technology major will give me the knowledge and skills I need to find a future good job and provide for my future family.

The EICAP scholarship is making a big difference to me and my parents. Thank you so much for your scholarship help.

Thank you again for your support and generosity. I want to eventually give back a similar opportunity to others, like a possibly of helping or giving a scholarship to future students like myself, or helping them with other needs.

My study journey has been made so much easier by this monetary help EICAP has given me and I'm really thankful for that. Having the pressure of performing properly in the academic, financial, work and family aspects can be really stressing, and knowing this help is here lifts one of the biggest pressures for me and my family, which is the financial one.

Thanks for this help and I hope once I'm finish with my studies we can give back.

Dear Scholarship Donor:

Thank you very much for one more time give me the opportunity to have the Education Scholarship. This makes a huge difference in my life and my kids. One more time the challenge is coming and thank you I'm able to do it.

Thank you very much.

2022 Report

WIPFLI

Independent Auditor's Report

Board of Directors
Eastern Idaho Community Action Partnership, Inc. and Affiliates
Idaho Falls, ID

Report on the Consolidated Financial Statements

We have audited the accompanying consolidated financial statements of Eastern Idaho Community Action Partnership, Inc. and Affiliates, (a nonprofit organization) which comprise the consolidated statement of financial position as of October 31, 2021, and the related consolidated statements of activities, functional expenses, and cash flows for the year then ended and the related notes to the consolidated financial statements.

Management's Responsibility for the Consolidated Financial Statements

Management is responsible for the preparation and fair presentation of these consolidated financial statements in accordance with accounting principles generally accepted in the United States; this includes the design, implementation, and maintenance of internal control relevant to the preparation and fair presentation of financial statements that are free from material misstatement, whether due to fraud or error.

Auditor's Responsibility

Our responsibility is to express an opinion on these consolidated financial statements based on our audit. We conducted our audit in accordance with auditing standards generally accepted in the United States and the standards applicable to financial audits contained in *Government Auditing Standards*, issued by the Comptroller General of the United States. Those standards require that we plan and perform the audits to obtain reasonable assurance about whether the consolidated financial statements are free from material misstatement. The financial statements of affiliates of Eastern Idaho Community Action Partnership, Inc., were not audited in accordance with *Government Auditing Standards*.

An audit involves performing procedures to obtain audit evidence about the amounts and disclosures in the consolidated financial statements. The procedures selected depend on the auditor's judgment, including the assessment of the risks of material misstatement of the consolidated financial statements whether due to fraud or error. In making those risk assessments, the auditor considers internal control relevant to the entity's preparation and fair presentation of the consolidated financial statements in order to design audit procedures that are appropriate in the circumstances, but not for the purpose of expressing an opinion on the effectiveness of the entity's internal control. Accordingly, we express no such opinion. An audit also includes evaluating the appropriateness of accounting policies used and the reasonableness of significant accounting estimates made by management, as well as evaluating the overall presentation of the consolidated financial statements.

We believe that the audit evidence we have obtained is sufficient and appropriate to provide a basis for our audit opinion.

Financial Audit Results

WIPFLI

Opinion

In our opinion, the consolidated financial statements referred to above present fairly, in all material respects, the financial position of Eastern Idaho Community Action Partnership, Inc. and Affiliates as of October 31, 2021, and the changes in their net assets and their cash flows for the year then ended in accordance with accounting principles generally accepted in the United States.

Other Matters

Supplementary Information

Our audit was performed for the purpose of forming an opinion on the consolidated financial statements as a whole. The supplementary information appearing on pages 23 - 27, which includes the schedule of expenditures of federal awards, Schedule A, as required by Title 2 U.S. *Code of Federal Regulations* Part 200, *Uniform Administrative Requirements, Cost Principles, and Audit Requirements for Federal Awards*; and the consolidating statement of financial position, Schedule B, and the consolidating statement of revenue and expenses, schedule C, are presented for the purposes of additional analysis, and are not a required part of the consolidated financial statements. Such information is the responsibility of management and was derived from and relates directly to the underlying accounting and other records used to prepare the consolidated financial statements. The information has been subjected to the auditing procedures applied in the audit of the consolidated financial statements and certain additional procedures, including comparing and reconciling such information directly to the underlying accounting and other records used to prepare the consolidated financial statements or to the consolidated financial statements themselves, and other additional procedures in accordance with auditing standards generally accepted in the United States. In our opinion, the information is fairly stated, in all material respects, in relation to the consolidated financial statements as a whole.

Other Reporting Required by Government Auditing Standards

In accordance with *Government Auditing Standards*, we have also issued our report dated May 23, 2022, on our consideration of Eastern Idaho Community Action Partnership, Inc.'s internal control over financial reporting and on our tests of its compliance with certain provisions of laws, regulations, contracts, and grant agreements and other matters. The purpose of that report is solely to describe the scope of our testing of internal control over financial reporting and compliance and the results of that testing, and not to provide an opinion on the effectiveness of Eastern Idaho Community Action Partnership, Inc.'s internal control over financial reporting or on compliance. That report is an integral part of an audit performed in accordance with *Government Auditing Standards* in considering Eastern Idaho Community Action Partnership, Inc.'s internal control over financial reporting and compliance.

Wipfli LLP

Wipfli LLP
Madison, Wisconsin

May 23, 2022

Birth to Five Program

Proposed Budget & Services

ACTUAL 2021

Head Start Federal Grant	\$ 4,312,541.10
USDA Revenue	\$ 38,232.03
TANF Grant	\$ 125,397.39
United Way Grant	\$ 18,802.78
Non-Federal Share	\$ 639,698.42

Head Start & Early Head Start

Salaries and Benefits	\$ 3,280,417.48
Professional Fees and Consultants	\$ 48,136.17
Misc.	\$ 511,987.92
Supplies and Materials	\$ 299,078.69
Occupancy	\$ 68,517.92
Training	\$ 104,402.92
Total	\$ 4,312,541.10

BUDGET 2022

Head Start Federal Grant	\$ 4,990,626.83
USDA Revenue	\$ 189,318.63
TANF Grant	\$ 145,264.00
United Way Grant	\$ 15,000.00
Non-Federal Share	\$ 1,247,701.75

Head Start & Early Head Start

Salaries and Benefits	\$ 4,162,825.99
Professional Fees and Consultants	\$ 42,530.62
Misc.	\$ 450,787.15
Supplies and Materials	\$ 154,619.33
Occupancy	\$ 74,025.11
Training	\$ 105,838.63
Total	\$ 4,990,626.83

*Head Start and Early Head Start grants were consolidated into one grant

Birth to Five Program

2020-2021 School Year Report

- 115** Total number of Head Start children
- 109** Total number of Head Start families
- 24** Total number of Early Head Start children
- 22** Total number of Early Head Start families
- 23,388** Total Meals Served

Head Start:

- 89** Average monthly enrollment
- 100%** Percentage of children with health insurance
- 73%** Percentage of children enrolled that received medical exams
- 73%** Percentage of children enrolled that received dental exams
- 93%** Percentage of enrolled children that received up-to-date immunization

Early Head Start:

- 16** Average monthly enrollment
- 96%** Percentage of children with health insurance
- 96%** Percentage of children enrolled that received medical exams
- 96%** Percentage of children enrolled that received dental exams
- 96%** Percentage of enrolled children that received up-to-date immunization

Birth to Five Program

2020-2021 School Year Report

Efforts to prepare children for kindergarten

EICAP's efforts to prepare children for kindergarten during the 2020 - 2021 school year can be summarized as follows while in the throes of a worldwide pandemic and teaching the children virtually for several months out of the school year.

- 1** Provide a research based curriculum that the Head Start and Early Head Start Teachers teach from. The curriculums are:
 - a. Frog Street imbedded with Conscious Discipline
 - b. Second Step
 - c. Child Protection Unit (Head Start Only)

- 2** Provide research based screenings.
 - a. ASQ-3 (Ages and Stages Questionnaires) for Developmental
 - b. DECA for Social/Emotional twice a year for Head Start and three times a year for Early Head Start

- 3** Use a research based assessment tool to monitor children's progress towards Kindergarten Readiness.
 - a. DRDP (Desired Results Developmental Profile) in ChildPlus

- 4** All Head Start families receive two education home visits and two education parent teacher conferences a year. Early Head Start and Duration Head Start families also receive a 3rd Education Parent Teacher Conference. On these visits information is provided individually to families to help work on their children's skills at home and school. Individual Goals are set for each child by the parents and the curriculums support the growth of the child's knowledge towards mastery of these skills.

EICAP School Readiness Goals:

Approaches to Learning

1. Children will participate in and complete tasks and activities, projects and experiences with curiosity.

Social Emotional

1. Children engage in positive interactions with adults and peers in a variety of situations, including everyday routines.
2. The child uses basic problem-solving and negotiation skills to resolve conflicts with other children and adults.

Language and Literacy

1. Children will engage in language during conversation, songs, stories and other learning experiences.
2. Children will demonstrate receptive language skills by discriminating and identifying sounds in spoken language.
3. Children will show awareness of print in various settings and understand different functions of printed forms.

Cognition and Science

1. Children will develop reasoning, memory, problem-solving, and thinking skills to understand and organize their world.

Math

1. Children will associate number concepts, vocabulary, quantities, and numerals.
2. Children will understand attributes and relative properties as related to size, capacity, and area.

Perceptual, Motor, and Physical Development

1. Children will develop gross motor skills to explore their environment and experiment with different ways of moving their bodies.
2. Children will demonstrate responsive eating patterns during mealtimes.



Parent Involvement Activities

Throughout the 2020-2021 school year each of our centers sent home worksheets with the families. These sheets have ideas of items they can work on with children while at home. We also encourage parents to volunteer in the center and participate in parent meetings. In addition, every month each center does a parent involvement activity (parent meeting). During this time, they provide trainings for parents and activities for the parent and child to do together. Some activities each center has done are listed below:

- Baking with Parents
- Family Game Night
- Policy Council Introduction and Voting
- Open House
- Carnival/ Obstacle Course
- Virtual Nutrition (Dietitian Andrea Porter)
- Talk About Touch
- Mental Health (Ostermiller Counseling)
- Literacy Night
- Dental Hygiene Education
- COVID and Seasonal Illness Education
- End of the Year Celebration
- Community Dinner Table in Salmon
- Car Seat Safety Education
- Boo at the Zoo Community Recruitment Event
- Trunk or Treat Community Recruitment Event
- Parent Mental Health Training and Resources
- Registered Dietician Parent Night with Nutrition and Picky Eater info
- Graduation Celebration with Parents
- Family Literacy Night with Librarian
- Conscious Discipline Training
- Male Involvement Activities: game night, painting cars night
- Parents Lunch Meeting/Policy Council Info
- Back to School Night
- Parent Welcome Breakfast
- Pumpkin Painting/Policy Council Voting
- Child Protection Unit/2nd Step
- Ways to stay safe at home/Time Capsules
- Wooden Car racing/Dad activity
- Week of the young child activities/ Literature-Librarian activity
- Literacy/ Daddy reading Night/Strategies to promote positive thinking
- Back Yard camping fun at home
- Parent Breakfast-Last Day of School program and parent Event

Birth to Five Program Report Continued

EICAP Head Start/Early Head Start Finalized Checkpoint Data aligned with the School Readiness Goals:

Seasonal Centers

Percentages and numbers from the DRDP Group Progress Report show that our Seasonal Centers observed 51 children in the Spring Checkpoint. Below are the results in each area of study.

- **Approaches to Learning -- Self-Regulation**

In the Fall checkpoint there are 17 out of 45 children above the median expectations for a percentage of 38% in the areas of Building Middle to Integrating Earlier. In the Spring there are 35 out of 45 children above the median expectations for a percentage of 78% in the areas of Building Middle to Integrating Earlier.

- **Social and Emotional Development**

In the Fall checkpoint there are 12 out of 45 children above the median expectations for a percentage of 27% in the areas of Building Later to Integrating Earlier. In the Spring there are 23 out of 45 children above the median expectations for a percentage of 51% in the areas of Building Later to Integrating Earlier.

- **Language and Literacy Development**

In the Fall checkpoint there are 21 out of 45 children above the median expectations for a percentage of 47% in the areas of Building Middle to Integrating Earlier. In the Spring there are 37 out of 45 children above the median expectations for a percentage of 82% in the areas of Building Middle to Integrating Earlier.

- **Cognition, Including Math and Science**

In the Fall checkpoint there are 2 out of 45 children above the median expectations for a percentage of 56% in the areas of Building Later to Integrating Earlier. In the Spring there are 22 out of 45 children above the median expectations for a percentage of 49% in the areas of Building Later to Integrating Earlier.

- **Physical Development -- Health**

In the Fall checkpoint there are 25 out of 45 children above the median expectations for a percentage of 38% in the areas of Building Later to Integrating Earlier. In the Spring there are 32 out of 45 children above the median expectations for a percentage of 71% in the areas of Building Later to Integrating Earlier.

- **History -- Social Science**

In the Fall checkpoint there are 23 out of 45 children above the median expectations for a percentage of 51% in the areas of Building Later to Integrating Earlier. In the Spring there are 37 out of 45 children above the median expectations for a percentage of 82% in the areas of Building Later to Integrating Earlier.

- **Visual and Performing Arts**

In the Fall checkpoint there are 25 out of 45 children above the median expectations for a percentage of 55% in the areas of Building Later to Integrating Earlier. In the Spring there are 38 out of 45 children above the median expectations for a percentage of 84% in the areas of Building Later to Integrating Earlier.

- **English Language Development**

In the Fall checkpoint there are 1 out of 7 children above the median expectations for a percentage of

14% in the areas of Integrating English. In the Spring there are 3 out of 7 children above the median expectations for a percentage of 43% in the areas of Building Middle to Integrating Earlier.

Duration Centers

Percentages and numbers from the DRDP Group Progress Report show that our Duration Centers observed 24 children in the Summer Checkpoint. Below are the results in each area of study.



- **Approaches to Learning -- Self-Regulation**

In the Fall checkpoint there are 5 out of 19 children above the median expectations for a percentage of 26% in the areas of Building Middle to Integrating Earlier. In the Summer there are 10 out of 19 children above the median expectations for a percentage of 53% in the areas of Building Middle to Integrating Earlier.

- **Social and Emotional Development**

In the Fall checkpoint there are 4 out of 19 children above the median expectations for a percentage of 21% in the areas of Building Later to Integrating Earlier. In the Spring there are 11 out of 19 children above the median expectations for a percentage of 58% in the areas of Building Later to Integrating Earlier.

- **Language and Literacy Development**

In the Fall checkpoint there are 8 out of 19 children above the median expectations for a percentage of 42% in the areas of Building Middle to Integrating Earlier. In the Spring there are 12 out of 19 children above the median expectations for a percentage of 63% in the areas of Building Middle to Integrating Earlier.

- **Cognition, Including Math and Science**

In the Fall checkpoint there are 3 out of 18 children above the median expectations for a percentage of 17% in the areas of Building Later to Integrating Earlier. In the Spring there are 11 out of 19 children above the median expectations for a percentage of 58% in the areas of Building Later to Integrating Earlier.

- **Physical Development -- Health**

In the Fall checkpoint there are 4 out of 19 children above the median expectations for a percentage of 21% in the areas of Building Later to Integrating Earlier. In the Spring there are 14 out of 19 children above the median expectations for a percentage of 74% in the areas of Building Later to Integrating Earlier.

- **History -- Social Science**

In the Fall checkpoint there are 6 out of 19 children above the median expectations for a percentage of 32% in the areas of Building Later to Integrating Earlier. In the Spring there are 16 out of 19 children above the median expectations for a percentage of 84% in the areas of Building Later to Integrating Earlier.

- **Visual and Performing Arts**

In the Fall checkpoint there are 7 out of 19 children above the median expectations for a percentage of 37% in the areas of Building Later to Integrating Earlier. In the Spring there are 10 out of 19 children above the median expectations for a percentage of 53% in the areas of Building Later to Integrating Earlier.

- **English Language Development**

In the Fall checkpoint there are 0 out of 1 child above the median expectations for a percentage of 0% in the areas of Integrating English. In the Spring there are 1 out of 1 child above the median expectations for a percentage of 100% in the area of Integrating English.

Birth to Five Program Report Continued

Early Head Start Centers

Percentages and numbers from the DRDP Group Progress Report show that our Early Head start Centers observed 28 children in the Summer Checkpoint. Below are the results in each area of study.

- **Approaches to Learning -- Self-Regulation**

In the Fall checkpoint there are 8 out of 15 children above the median expectations for a percentage of 53% in the areas of Exploring Later to Building Earlier. In the Summer there are 12 out of 15 children above the median expectations for a percentage of 80% in the areas of Exploring Later to Building Earlier.

- **Social and Emotional Development**

In the Fall checkpoint there are 4 out of 15 children above the median expectations for a percentage of 21% in the areas of Exploring Later to Building Earlier. In the Spring there are 8 out of 15 children above the median expectations for a percentage of 53% in the areas of Exploring Later to Building Earlier.

- **Language and Literacy Development**

In the Fall checkpoint there are 8 out of 15 children above the median expectations for a percentage of 53% in the areas of Exploring Later to Building Earlier. In the Spring there are 10 out of 15 children above the median expectations for a percentage of 67% in the areas of Exploring Later to Building Earlier.

- **Cognition, Including Math and Science**

In the Fall checkpoint there are 7 out of 15 children above the median expectations for a percentage of 47% in the areas of Exploring Later to Building Earlier. In the Spring there are 12 out of 15 children above the median expectations for a percentage of 80% in the areas of Build Exploring Later to Building Earlier.

- **Physical Development -- Health**

In the Fall checkpoint there are 11 out of 15 children above the median expectations for a percentage of 73% in the areas of Exploring Later to Building Earlier. In the Spring there are 7 out of 15 children above the median expectations for a percentage of 46% in the areas of Exploring Later to Building Earlier.

The Description of Developmental Levels for EHS & HS

The number of levels in a measure varies depending on the competencies that are appropriate for that measure's developmental continuum. The levels are organized under four categories from early infancy up to kindergarten entry: Responding, Exploring, Building, and Integrating:

Responding (Earlier, Later) Knowledge, skills, or behaviors that develop from basic responses (through using senses and through actions) to differentiated responses. Children generally engage in back-and-forth interactions with familiar adults and communicate through nonverbal messages.

Exploring (Earlier, Middle, Later) Knowledge, skills, or behaviors that include active exploration including purposeful movement, purposeful exploration and manipulation of objects, purposeful communication, and the beginnings of cooperation with adults and peers. Children generally begin this period by using nonverbal means to communicate and, over time, grow in their ability to communicate verbally or use other conventional forms of language.

Building (Earlier, Middle, Later) Knowledge, skills, or behaviors that demonstrate growing understanding of how people and objects relate to one another, how to investigate ideas, and how things work. Children use language to express thoughts and feelings, to learn specific early literacy and numeracy skills, and to increasingly participate in small group interactions and cooperative activities with others.

Integrating (Earlier) Knowledge, skills, or behaviors that demonstrate the ability to connect and combine strategies in order to express complex thoughts and feelings, solve multi-step problems, and participate in a wide range of activities that involve social-emotional, self-regulatory, cognitive, linguistic, and physical skills. Children begin to engage in mutually supportive relationships and interactions. Note that the developmental levels for the ELD domain differ from the above format as they represent the developmental progression for the acquisition of English as a second language during the early childhood years.

Events

HEATING ASSISTANCE



Available until
March 31
(or until funding runs out)

Assistance is available for your home heating source including:

Electric **Wood** **Heating Oil**
Intermountain Gas **Propane**

Participants must qualify to receive services.

Applications are available at your local EICAP office, online at EICAP.org, or through email and mail by contacting your local office.

Apply Now!

Idaho Falls	Rexburg/Upper Valley	Lemhi & Custer Counties
935 E Lincoln Rd Idaho Falls ID 83401 208-522-5391 Email: eaif@eicap.org	275 Stationary Place Rexburg ID 83440 208-356-8849 Email: fsrexburg@eicap.org	955 Riverfront Dr Suite A Salmon ID 83467 208-756-3999 Email: fssalmon@eicap.org

HEAD START BOOK DRIVE



Foster a love of reading by providing books to read!!

Book Drive to benefit Blackfoot Head start

- Books needed - gently used or new picture and board books appropriate for children from toddler through Kindergarten
- Please drop off books at Blackfoot Early Head Start or at the Migrant Outreach Center/Early Childhood Center Library (440 W. Judicial Street)
- Reading to children increases vocabulary, strengthens a bond with them, boosts memory and enhances focus.
- By reading aloud to children it also stimulates their imagination and expands their understanding of the world.

February 1 – March 1, 2022
Blackfoot, Idaho



Interested in Head Start classes for your preschooler?

Parents and Guardians join us for our open house. Pick up an application and apply. Learn more about our program and the other programs EICAP offers. Families can meet the staff and view our preschool classrooms. Please stop in to any of our Idaho Falls locations.

Wednesday, March 23, 2022

11:00-3:00pm

Head Start-Ages 3-5

935 E Lincoln Rd

Idaho Falls, ID 83405

Head Start -Ages 3-5

Early Head Start-Ages Birth to 3



If you know someone that is interested in Head Start, please invite them to come and see one of our centers with you.

Si conoce a alguien que está interesado en Head Start, invítelo a que visite uno de nuestros centros con usted.

LAST CALL

ENERGY ASSISTANCE PROGRAM ENDS

MARCH 31ST, 2022

Call your local EICAP office to apply or visit www.eicap.org

IDAHO FALLS
935 E Lincoln Rd
Idaho Falls, ID 83401
208-522-5391
eaif@eicap.org

REXBURG
275 Stationary Place
Rexburg, ID 83440
208-356-8849
fsrexburg@eicap.org

SALMON
955 River Front Dr, Ste A
Salmon, ID 83467
208-756-3999
fssalmon@eicap.org

My community,
Your community,
OUR community – free of elder abuse!



#WEAAD

NCEA
National Center on Elder Abuse

PLEASE DONATE

Our Rexburg EICAP Food Pantry is in need of some crucial community donations

LAUNDRY DETERGENT
DIAPERS AND WIPES
PAPER PRODUCTS

CANNED ITEMS
BOXED MEALS
CANNED MEATS
FROZEN MEATS

THANK YOU FOR YOUR SUPPORT!



PLEASE CALL!



275 STATIONARY PLACE
REXBURG, ID 83440
208-356-8849

STARTING TONIGHT!

Boo at the Zoo

5-8:30 PM | ALL AGES

Costume contests, trick-or-treat stations, thousands of lights and illuminated pumpkins.




USBORNE
BOOKS & MORE

Book Fair

Benefiting... EICAP Head Start

Visit the **VIRTUAL Book Fair** at...
FUNofReading.com/bookfair

Make sure our organization's name is listed when checking out.
We earn 50% of the sales in FREE books or up to 20% in CASH!



2000+ titles available - books for all ages!

VIRTUAL Book Fair Dates
Monday, March 14th
Friday, April 1st

Chapter Books | Jigsaw Puzzles | Activity/Sticker Books | Classics



FUN FOOD RAFFLE PRIZES

Open House

HOOPES EHS

20 April 3:30-5:30 PM

If you have questions, please contact us:
208-542-8170
bhurch@eicap.org
mhentez@eicap.org

1465 Hoopes Ave, Idaho Falls
Come see what Early Head Start has to offer: childcare, employment, and more!! Come join the Head Start family!

POWERFUL TOOLS FOR CAREGIVERS

AN EVIDENCE-BASED CLASS FOR FAMILY CAREGIVERS



"After taking this class I am a more confident caregiver! Having tools to resolve problems is a definite advantage in becoming a better caregiver and a happier, wiser, and healthier me...and a healthier us!"


JOIN US FOR THIS FREE VALUABLE SIX WEEK WORKSHOP!

UPCOMING CLASS:
SEPT. 7TH - OCT. 12TH 2022
WEDNESDAYS FROM 2:30-5:00 PM
IN PERSON / OR VIRTUAL WILL BE VOTED ON
ALL MATERIALS ARE INCLUDED & WILL BE DELIVERED BEFORE THE FIRST SESSION.
CONTACT:
JODI STANTON: 208-522-5370 EXT. 203
JSTANTON@EICAP.ORG
FOR MORE INFORMATION OR TO REGISTER,
SPACE IS LIMITED. ADDITIONAL CLASSES COMING SOON!

- ✓ Learn strategies to reduce stress
- ✓ Communicate more effectively
- ✓ Navigate family dynamics while making tough decisions
- ✓ Build confidence in your decisions
- ✓ Learn effective problem-solving skills
- ✓ Connect with helpful resources
- ✓ Learn to give yourself credit, not guilt

YOU DON'T HAVE TO DO IT ALONE.

Powerful Tools for Caregivers is an award-winning program that has helped thousands of family caregivers. Learn how to take care of YOU so that you can take care of them!



EICAP - Eastern Idaho Community Action Partnership
May 7, 2022

EICAP is hanging out today at the Cinco de Mayo event from 11 to 7, come see us! It's free and lots to do for the whole family! Located at Tautphaus park, it's sure to be a good time! See the article in the comments for more info.



EICAP - Eastern Idaho Community Action Partnership
October 28, 2022

Blackfoot! Come see us at the trunk or treat tonight! We'll have goodies to give away and more to tell you about the wonderful programs we offer.



EASTERN IDAHO community Action
Helping People. Changing Lives.

apply now

THE

ENERGY ASSISTANCE

SEASON IS IN FULL SWING!

NOVEMBER 1, 2022 - MARCH 31, 2023

Contact your local EICAP office today!

IDAHO FALLS 935 E Lincoln Rd Idaho Falls, ID 83401 208 522-5391 eail@eicap.org	REXBURG 275 Stationary Place Rexburg, ID 83440 208 356-8849 fsrexburg@eicap.org	SALMON 955 River Front Dr, Ste A Salmon, ID 83467 208 756-3999 fssalmon@eicap.org
---	--	--

Contact Us

Main Office

935 E Lincoln Rd
Idaho Falls, ID 83401

Tel: 208-522-5391
or 1-800-632-4813

Outreach Office

Lemhi & Custer Counties
955 Riverfront Drive, Ste A
Salmon, ID 83467

Tel: 208-756-3999
or 1-800-359-9163

Rexburg / Upper Valley Office

275 Stationery Place
Rexburg, ID 83440

Tel: 208-356-8849

Visit our website at: www.eicap.org

Follow us on Facebook